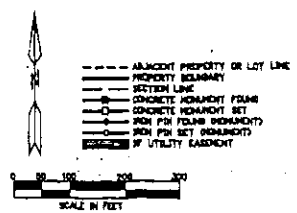


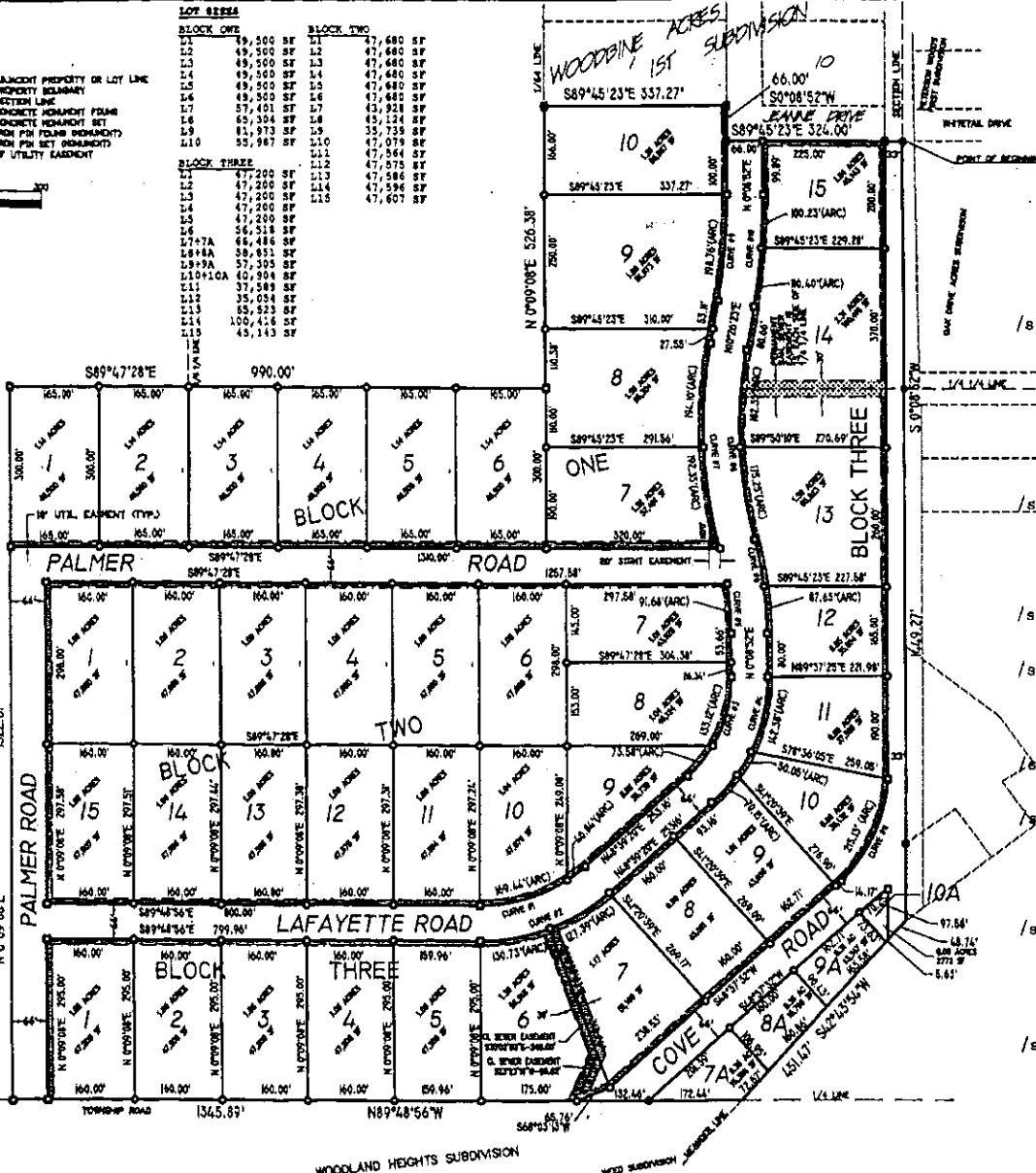
# WOODBINE ACRES 2ND SUBDIVISION

A PART OF THE NE 1/4, SECTION 12, T153N R65W



- CURVE DATA**
- CURVE #1**  
 $\Delta = 4131.44'$   
 $R = 290.12'$   
 $T = 110'$   
 $L = 210.28'$
- CURVE #2**  
 $\Delta = 4131.44'$   
 $R = 290.12'$   
 $T = 110'$   
 $L = 210.28'$
- CURVE #3**  
 $\Delta = 4830.28'$   
 $R = 244.15'$   
 $T = 110.00'$   
 $L = 200.70'$
- CURVE #4**  
 $\Delta = 4830.28'$   
 $R = 310.15'$   
 $T = 139.74'$   
 $L = 262.58'$
- CURVE #5**  
 $\Delta = 1444.51'$   
 $R = 618.18'$   
 $T = 80.00'$   
 $L = 159.12'$
- CURVE #6**  
 $\Delta = 1444.51'$   
 $R = 624.18'$   
 $T = 80.54'$   
 $L = 170.10'$
- CURVE #7**  
 $\Delta = 2502.32'$   
 $R = 884.18'$   
 $T = 196.36'$   
 $L = 386.45'$
- CURVE #8**  
 $\Delta = 2502.32'$   
 $R = 818.78'$   
 $T = 181.70'$   
 $L = 357.60'$
- CURVE #9**  
 $\Delta = 1077.41'$   
 $R = 1106.24'$   
 $T = 99.55'$   
 $L = 198.76'$
- CURVE #10**  
 $\Delta = 1077.41'$   
 $R = 1172.24'$   
 $T = 105.60'$   
 $L = 210.82'$
- CURVE #11**  
 $\Delta = 4878.10'$   
 $R = 254.27'$   
 $T = 114.48'$   
 $L = 215.13'$

| LOT AREA |           | BLOCK ONE |           | BLOCK TWO |           |
|----------|-----------|-----------|-----------|-----------|-----------|
| L1       | 49,500 SF | L1        | 47,680 SF | L1        | 47,680 SF |
| L2       | 49,500 SF | L2        | 47,680 SF | L2        | 47,680 SF |
| L3       | 49,500 SF | L3        | 47,680 SF | L3        | 47,680 SF |
| L4       | 49,500 SF | L4        | 47,680 SF | L4        | 47,680 SF |
| L5       | 49,500 SF | L5        | 47,680 SF | L5        | 47,680 SF |
| L6       | 49,500 SF | L6        | 47,680 SF | L6        | 47,680 SF |
| L7       | 57,401 SF | L7        | 43,928 SF | L7        | 43,928 SF |
| L8       | 65,304 SF | L8        | 45,124 SF | L8        | 45,124 SF |
| L9       | 81,973 SF | L9        | 55,739 SF | L9        | 55,739 SF |
| L10      | 55,987 SF | L10       | 47,079 SF | L10       | 47,079 SF |
| L11      |           | L11       | 47,584 SF | L11       | 47,584 SF |
| L12      |           | L12       | 47,575 SF | L12       | 47,575 SF |
| L13      | 47,200 SF | L13       | 47,586 SF | L13       | 47,586 SF |
| L14      | 47,200 SF | L14       | 47,596 SF | L14       | 47,596 SF |
| L15      | 47,200 SF | L15       | 47,607 SF | L15       | 47,607 SF |
| L16      | 47,200 SF |           |           |           |           |
| L17      | 47,200 SF |           |           |           |           |
| L18      | 47,200 SF |           |           |           |           |
| L19      | 47,200 SF |           |           |           |           |
| L20      | 47,200 SF |           |           |           |           |
| L21      | 47,200 SF |           |           |           |           |
| L22      | 47,200 SF |           |           |           |           |
| L23      | 47,200 SF |           |           |           |           |
| L24      | 47,200 SF |           |           |           |           |
| L25      | 47,200 SF |           |           |           |           |
| L26      | 47,200 SF |           |           |           |           |
| L27      | 47,200 SF |           |           |           |           |
| L28      | 47,200 SF |           |           |           |           |
| L29      | 47,200 SF |           |           |           |           |
| L30      | 47,200 SF |           |           |           |           |
| L31      | 47,200 SF |           |           |           |           |
| L32      | 47,200 SF |           |           |           |           |
| L33      | 47,200 SF |           |           |           |           |
| L34      | 47,200 SF |           |           |           |           |
| L35      | 47,200 SF |           |           |           |           |
| L36      | 47,200 SF |           |           |           |           |
| L37      | 47,200 SF |           |           |           |           |
| L38      | 47,200 SF |           |           |           |           |
| L39      | 47,200 SF |           |           |           |           |
| L40      | 47,200 SF |           |           |           |           |
| L41      | 47,200 SF |           |           |           |           |
| L42      | 47,200 SF |           |           |           |           |
| L43      | 47,200 SF |           |           |           |           |
| L44      | 47,200 SF |           |           |           |           |
| L45      | 47,200 SF |           |           |           |           |
| L46      | 47,200 SF |           |           |           |           |
| L47      | 47,200 SF |           |           |           |           |
| L48      | 47,200 SF |           |           |           |           |
| L49      | 47,200 SF |           |           |           |           |
| L50      | 47,200 SF |           |           |           |           |
| L51      | 47,200 SF |           |           |           |           |
| L52      | 47,200 SF |           |           |           |           |
| L53      | 47,200 SF |           |           |           |           |
| L54      | 47,200 SF |           |           |           |           |
| L55      | 47,200 SF |           |           |           |           |
| L56      | 47,200 SF |           |           |           |           |
| L57      | 47,200 SF |           |           |           |           |
| L58      | 47,200 SF |           |           |           |           |
| L59      | 47,200 SF |           |           |           |           |
| L60      | 47,200 SF |           |           |           |           |
| L61      | 47,200 SF |           |           |           |           |
| L62      | 47,200 SF |           |           |           |           |
| L63      | 47,200 SF |           |           |           |           |
| L64      | 47,200 SF |           |           |           |           |
| L65      | 47,200 SF |           |           |           |           |
| L66      | 47,200 SF |           |           |           |           |
| L67      | 47,200 SF |           |           |           |           |
| L68      | 47,200 SF |           |           |           |           |
| L69      | 47,200 SF |           |           |           |           |
| L70      | 47,200 SF |           |           |           |           |
| L71      | 47,200 SF |           |           |           |           |
| L72      | 47,200 SF |           |           |           |           |
| L73      | 47,200 SF |           |           |           |           |
| L74      | 47,200 SF |           |           |           |           |
| L75      | 47,200 SF |           |           |           |           |
| L76      | 47,200 SF |           |           |           |           |
| L77      | 47,200 SF |           |           |           |           |
| L78      | 47,200 SF |           |           |           |           |
| L79      | 47,200 SF |           |           |           |           |
| L80      | 47,200 SF |           |           |           |           |
| L81      | 47,200 SF |           |           |           |           |
| L82      | 47,200 SF |           |           |           |           |
| L83      | 47,200 SF |           |           |           |           |
| L84      | 47,200 SF |           |           |           |           |
| L85      | 47,200 SF |           |           |           |           |
| L86      | 47,200 SF |           |           |           |           |
| L87      | 47,200 SF |           |           |           |           |
| L88      | 47,200 SF |           |           |           |           |
| L89      | 47,200 SF |           |           |           |           |
| L90      | 47,200 SF |           |           |           |           |
| L91      | 47,200 SF |           |           |           |           |
| L92      | 47,200 SF |           |           |           |           |
| L93      | 47,200 SF |           |           |           |           |
| L94      | 47,200 SF |           |           |           |           |
| L95      | 47,200 SF |           |           |           |           |
| L96      | 47,200 SF |           |           |           |           |
| L97      | 47,200 SF |           |           |           |           |
| L98      | 47,200 SF |           |           |           |           |
| L99      | 47,200 SF |           |           |           |           |
| L100     | 47,200 SF |           |           |           |           |



**Conditions of Survey**  
 I, David K. Hovendick, Registered Land Surveyor in the State of North Dakota, do hereby certify that this is a true and correct representation of a tract of land surveyed by me or under my direct supervision, that monuments for the evidence of future surveys have been placed in the ground as indicated and that said tract is situated in Government lot 3, the NE 1/4 and also the NE 1/4 of the NE 1/4 Section 12, T153N R65W of the 8th Principal Meridian, Ramsey County, North Dakota, being more particularly described as follows: Beginning at the southwest corner of the platted Woodbine Acres First Subdivision; thence S0°08'52"W along the east line of said Section 12 a distance of 119.27 feet to the established corner of David Luter; thence S45°15'13"W along the southeast line a distance of 451.15 feet to the 1/4 line; thence S89°45'23"E along the 1/4 line a distance of 1341.87 feet; thence S0°25'09"E a distance of 1322.81 feet; thence S89°47'28"E a distance of 596.00 feet to the 1/8 line; thence S0°25'09"E a distance of 211.38 feet to the southeast corner of said Woodbine Acres First Subdivision; thence S89°45'23"E along the southerly boundary a distance of 337.27 feet; thence S0°25'09"E a distance of 66.00 feet; thence S89°45'23"E along said south boundary a distance of 324.00 feet to the point of beginning. Said tract of land contains 54.47 acres more or less and is proposed for 1-1 zoning.

Subscribed and sworn to on this 4th day of May, 1998 A.D.  
 /s/ David K. Hovendick /s/ Helen Carlson  
 David K. Hovendick, Notary Public  
 Registered Land Surveyor, Ramsey County, North Dakota  
 North Dakota Registration No. 3612 My commission expires: 1-22-04  
 State of North Dakota  
 County of Ramsey ) 88

**Declaration**  
 I, the undersigned do hereby certify that I am the managing partner of the Woodbine Development LLP and have caused it to be surveyed and subdivided into lots and blocks as shown on the official plat and certificate of David K. Hovendick, Registered Land Surveyor. Said subdivision is situated in the NE 1/4 of Section 12, T153N R65W. I hereby declare that said subdivisions shall be known as Woodbine Acres Second Subdivision and hereby dedicate all streets as shown on said plat to the public forever. All ingress and egress access is to be connected to subdivisions streets and not onto existing township roads. I also dedicate all utility easements shown for public utility lines a sanitary sewer easement as shown on the official plat.

Subscribed and sworn to on this 22nd day of June, 1998 A.D.  
 /s/ Craig Maetzold /s/ Helen Carlson  
 Craig Maetzold, Managing Partner, Notary Public  
 Woodbine Development LLP, Ramsey County, North Dakota  
 My commission expires: 1-22-04  
 State of North Dakota  
 County of Ramsey ) 88

**Township Board Approval**  
 I hereby approve the dedicated roads shown on this plat of Woodbine Acres Second Subdivision, situated in the NE 1/4 of Section 12, T153N R65W, Ramsey County, North Dakota, this 13th day of July, 1998 A.D.  
 /s/ Jerry A. Johnson /s/ Karen Meter  
 Jerry A. Johnson, Karen Meter  
 Poplar Grove Township Board, Poplar Grove Township Board

Subscribed and sworn to on this 12th day of July, 1998 A.D.  
 /s/ Douglas Mohr  
 Douglas Mohr, Notary Public  
 Ramsey County, North Dakota, My commission expires: 9-27-2001  
 State of North Dakota  
 County of Ramsey ) 88

**City Planning and zoning**  
 This plat of Woodbine Acres Second Subdivision is hereby approved this 23rd day of April, 1998 A.D.  
 /s/ Robert K. Johnson /s/ Helen Carlson  
 Robert K. Johnson, Helen Carlson  
 Devils Lake Planning Commission, Devils Lake Planning Commission

Subscribed and sworn to on this 23rd day of April, 1998 A.D.  
 /s/ Margie A. Austin  
 Margie A. Austin, Notary Public  
 Ramsey County, North Dakota, My commission expires: 2-20-04  
 State of North Dakota  
 County of Ramsey ) 88

**City Commission Approval**  
 This plat of Woodbine Acres Second Subdivision is hereby approved this 4th day of May, 1998 A.D.  
 /s/ Fred Both /s/ Margie A. Austin  
 Fred Both, Margie A. Austin  
 Devils Lake City Commission, Devils Lake City Commission

I hereby certify that this instrument was filed in this office of record on this 4th day of July, 1998 A.D. at 11:59 o'clock A.M. and was filed as document number 215785.  
 /s/ Carol Bertsch /s/ Byrdia Spidahl  
 Carol Bertsch, Byrdia Spidahl  
 Ramsey County Registrar of Deeds, Cab 2 Slide  
 Ramsey County, North Dakota, My commission expires: 3-31-04  
 State of North Dakota  
 County of Ramsey ) 88